

# ST MARY'S COLLEGE



## INTRODUCTION

We will be offering the OCR course, which is modular. The normal pattern will be for a student to complete 2 modules in the first year to obtain an AS certificate, then to complete another 2 modules in the second year and obtain an A-level certificate.

## AS LEVEL

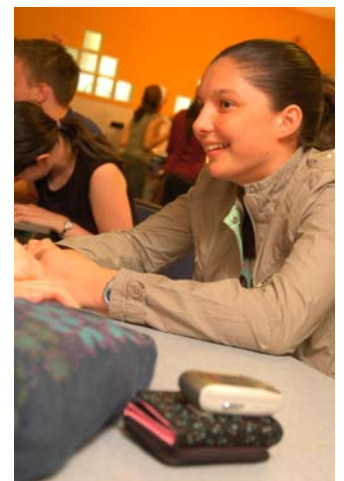
### *Content*

The AS level covers the following areas of Psychology

- **Cognitive Psychology** – Looks at perceptions and the reliability of eye witness testimony.
- **Social Psychology** – Considers how and why individuals respond to the people around them.
- **Developmental Psychology** – Deals with the way a child develops their intellectual, social and emotional characteristics.
- **Physiological Psychology** – Deals with the way our body works and our behaviour.
- **Individual Differences** – Looks at the characteristics that allow us to distinguish between people, such as personality, intelligence and atypical behaviour.
- **Psychological Investigations** – The student carries out 4 pieces of research then analyses and evaluates their results.

### *How is the course delivered?*

The AS course is designed to give a gradual introduction to psychological topics. Initially students will follow a short induction familiarising them with the psychological ideas and methods of investigation. After this students become more familiar with the topic areas specified in the syllabus via a number of learning experiences such as group work, research and the use of IT as well as lecture style delivery.



## ***Entry requirements***

To study AS Psychology you need to have a GCSE grade C or above in English Language. As Psychology has elements that require mathematical and scientific skills, a GCSE grade C, or better in Maths and Science is desirable. Please note that the entry requirements for an AS programme depend upon the number of AS/GNVQ courses you intend to take.

## ***What skills and interests do I need?***

You will need good evaluation skills. You need to identify the strengths and weaknesses of the different methods used in psychological research. You will need to analyse data, interpret it correctly and to display your results using the appropriate graphs. You will need to become familiar with a lot of new technical terms, ie ecological validity, ethnocentrism and demand characteristics to name just a few.

## ***How is the course assessed?***

The practical activities (4 pieces of research) are assessed externally in a 1 hour exam in May. The core studies are tested through a 2 hour exam also in May.

## **A2 LEVEL**

### ***Content***

The A2 course covers the following aspects

- **Health & Clinical Psychology**
- **Forensic Psychology**
- **Approaches and Research Methods**

## ***How is the course delivered?***

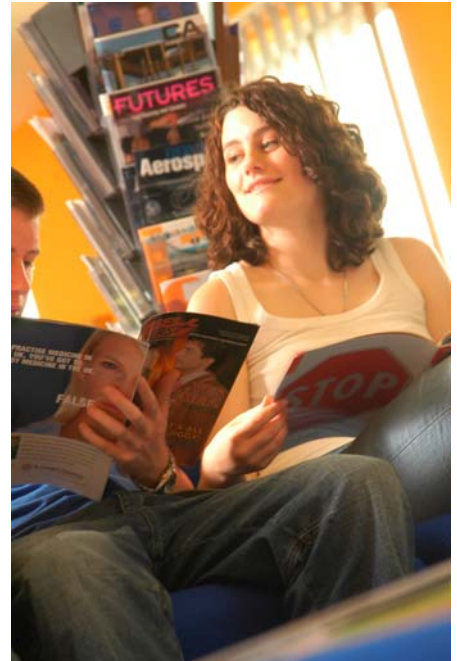
Although the methods of delivery for the A2 course will be similar to those used for the AS course, students will be expected to further develop their research skills and carry out more independent work.

## ***Entry requirements***

To study A2 Psychology you will need grade E or above at AS level.

## ***How is the course assessed?***

Both the Health & Clinical Psychology and Forensic Psychology areas are assessed during a 1 hour 30 mins exam. Approaches & Research Methods is assessed by a 1 hour 30 mins exam.



## ***Progression routes***

Psychology A-level is recognised by all universities and can be combined with both science and arts subjects. Previous psychology students have gone on to read Law, Music, English, Biology, Teaching, Art and many other subjects at degree level. If you are not intending to go to university, psychology is useful for any career that involves people, eg management, social services, nursing and personnel work.

## ***Further Information***

***For further information please contact Elaine Brown***

***Full specifications can be found at [www.ocr.org.uk](http://www.ocr.org.uk)***

**NOTES:**

**St Mary's College  
Saltersgill Avenue  
Middlesbrough  
TS4 3JP**

**Tel: (01642) 814680**

**[www.stmarys-sfc.ac.uk](http://www.stmarys-sfc.ac.uk)**

**Fax: (01642) 819624**